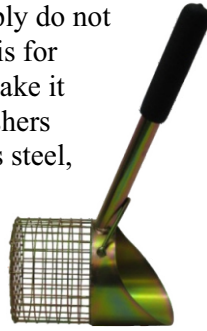


Coin and Relic



We have several scoops of different lengths and features to accommodate your every need. We have short handle, long handle and convertible scoops that convert from short handles to long handles by screwing on a handle extension. The long handle is for soft dirt or sand or when you simply do not want to bend over. The short handle is for digging into hard dirt. The 37 perforations on the bill make it one ounce lighter and easier to use. The nut, bolt & washers that secure the handle to the basket are made of stainless steel, so they'll never rust together.



Short and Long Handle Scoops

- | | |
|--|---------|
| 15" Non-perforated Treasure Scoop (above right) #00093 | \$32.00 |
| 15" Perforated Treasure Scoop (above left) #00094 | \$37.00 |
| 15" Non-perforated Stainless Steel Treasure Scoop #00095 | \$58.00 |
| 15" Perforated Stainless Steel Treasure Scoop #00096 | \$62.00 |
| 33" Non-perforated Treasure Scoop (below) #00097 | \$36.00 |
| 33" Perforated Treasure Scoop #00098 | \$41.00 |



Convertible Handle Scoops

- | | |
|---|---------|
| 15" to 33" Non-perforated Treasure Scoop #00099 | \$46.00 |
| 15" to 33" Perforated Treasure Scoop (below) #00100 | \$50.00 |



The Original Backpacking Self-Locking Folding Sluice Box

Over 30,000 Sold Nationwide!! And Counting!

- .063" Aluminum Body with Flare
- 50" Long X 9" Wide
- 8 Zinc Plated 18 ga. Steel Riffles
- 16 ga. Aluminum Expanded Metal
- NEW deep V Ribbed Black Rubber Matting for easy Gold ID
- Nylon Carry Strap for easy Transport
- All screws secured by nylock nuts that never fall off.
- Fits in a 5 gallon bucket
- Weight 7.25 Lbs.



\$139.00

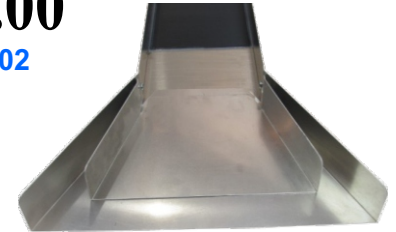
#00001

Patent No. 8,322,536

Self locking backpacking stream Sluice Box that folds from 50" to 15" for easy transportation & storage. Supplied with, "How to use" 58 minute instructional DVD. (When purchased directly from Royal)

20" Super Flare \$20.00

Increase Productivity!
Attach this Super flare to your 50" Backpacking Self Locking Stream Sluice Box to increase water flow by over 36% over the standard flare!



#00002

54" Ultra-Wide Flare Stream Sluice

\$143.00 #00003

- .063" Aluminum Body
- 54" L x 10" W x 3" D
- 20-1/2" wide removable flare
- NEW deep V Ribbed Black Rubber Matting for easy Gold ID
- 4" Black anodized carrying handle
- 8 Zinc Plated 18 ga. Steel Riffles
- 10.2 lbs.



30" Compact Sluice Box \$72.00 #00004

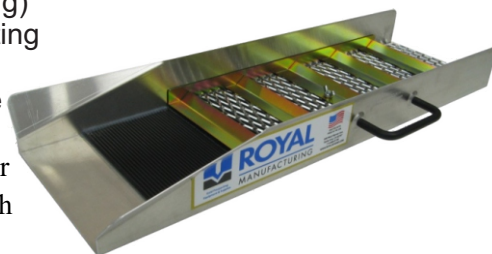
- .063" Aluminum
- 30" Long x 7" Wide x 2.5" Tall
- 5 Zinc Plated Riffles (Gold Coloring)
- NEW deep V Ribbed Rubber Matting for Quick Gold ID
- Removable flare stores neatly inside Sluice
- 4" Black anodized carrying handle
- 3.7 lbs.



Complete with written instructions.

24" Compact Sluice Box \$60.00 #00005

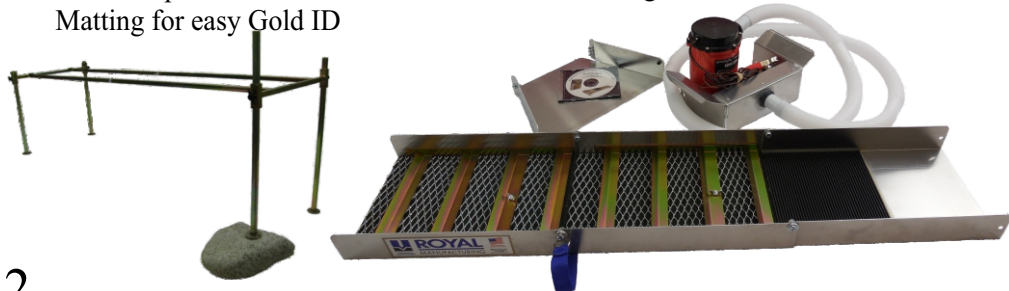
- .063" Aluminum
- 24" Long x 7" Wide x 2.5" Tall
- 5 Zinc Plated Riffles (Gold Coloring)
- NEW deep V Ribbed Rubber Matting for Quick Gold ID
- 4" Black anodized carrying handle
- 3.1 lbs.



Great quality at a fair price. Complete with written instructions.

Multi-Purpose Recirculating Sluice Box Kit with 2200 GPH Pump \$343.00 #00172

- .063" Aluminum Body with Flare
- 50" Long X 9" Wide
- 8 Zinc Plated 18 ga. Steel Riffles
- 16 ga. Aluminum Expanded Metal
- NEW deep V Ribbed Black Rubber Matting for easy Gold ID
- Nylon Carry Strap for easy Transport
- All screws secured by nylock nuts that never fall off.
- Fits in a 5 gallon bucket
- Weight 7.25 Lbs.



Sluice Box Matting

Deep Ribbed Rubber Matting

Now used in all of our Sluice Boxes. **\$11.00 each**
0.165 thickness, grooves are 9/64", **#00088**
that's over an 1/8" deep.



Stickier than our previous Rubber Matting. Holds Gold Better!
Sold in 12" X 36" rolls.

Green Ribbed Carpet

Roll measures 12" X 36"
Used in all of our Sluice Boxes

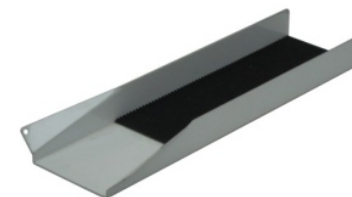
\$6.25 each
#00090



12" Mini Sluice

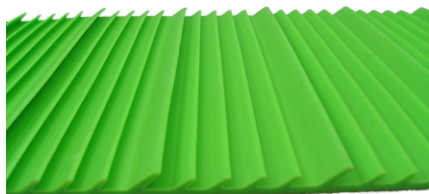
Powder coated aluminum body with black ribbed rubber matting. This sluice is a great conversational piece or a wonderful decoration.

\$9.00
#00006



Hi-Low Rubber Riffle

Cut and insert into your Sluice Box or Highbanker for ultra fine Gold Recovery. You must classify your materials down to maximum 1/4" for best Recovery results. For extended run butt end to end.



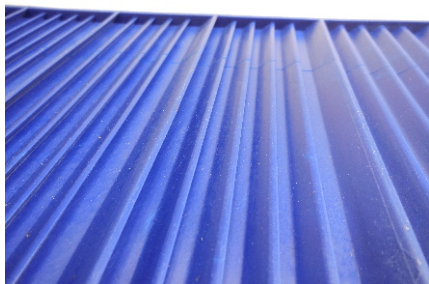
\$25.00 ea

#00126

8" X 20 1/2" each

New! 2017 New!

Lip on each side keeps concentrates on Riffle Tray when removing. Only on 10" pictured below.



\$30.00 ea

#00127

10" X 20 1/2" each

Miners Moss (Colors may vary)

10" wide X 36" long = **\$12.00 each roll** #00091

12" wide X 36" long = **\$14.00 each roll** #00092

For that fast moving water

Not recommended for stream fed sluice boxes.



Multi-Purpose Recirculating Sluice Box Kit

- Sluice folds from 15" to 50", Flare included
- Stand with retractable legs
- Tsunami 1200GPH 12VDC Pump
- 7' X 1-1/8" Hose
- 15.9 Lbs.

\$305.00

#00007

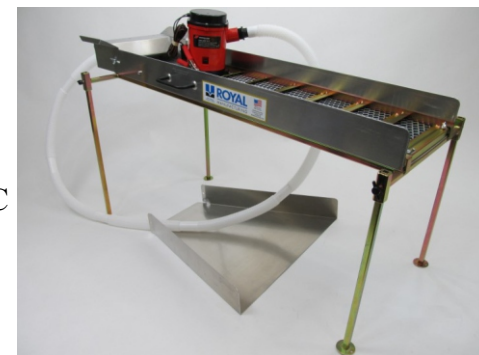


Our Multi Purpose Recirculating Sluice Box Kit is built around our patented rugged Self - locking sluice box. This is a true Multi Purpose Machine. The sluice can be used alone, it can be used with our stand that includes adjustable legs to make it easy when leveling out your sluice box in any terrain, add a Header Kit when in still waters or no water (lakes, ponds, slow creeks and rivers, etc.), then it becomes a highbanker. Our kit consists of a Self Locking Backpacking Sluice Box and Header kit, Sluice stand that breaks down to 24" with adjustable legs. With the addition of your 30 gallon reservoir and tailing buckets (not included), you can turn this unit into a recirculator. That's 3 machines for the price of one! **Battery not included**

54" Ultra Wide Flare Stream Sluice Kit

\$335.00 #00008

- 54" Sluice box with flare
- Detachable 10" Header
- 7' of 1 1/8" hose.
- American made Johnson 12VDC 2060 GPH pump.
- Filter screen for pump
- 23.5 Lbs.



Our 54" Ultra Wide Flare Stream Sluice Kit is built around our rugged 54" Stream sluice box. A larger version of the Multi Purpose Kit, it has all the same quality features. The sluice can be used alone, it can be used with our stand that includes adjustable legs to make it easy when leveling out your sluice box in any terrain, add a Header Kit when in still waters (lakes, ponds, slow creeks and rivers, etc.) or no water, then it becomes a highbanker. Our kit consists of a 54" Sluice Box, Header kit with pump, sluice stand with adjustable legs. With the addition of a reservoir and tailing buckets (not included), you can turn this unit into a recirculator. That's 3 machines for the price of one!

30" Recirculating Sluice Box Kit

\$238.00 #00009

- 30" Compact Sluice Box
- Attachable flare not pictured
- Compact Folding Stand
- Tsunami 1200 GPH 12VDC Pump
- 7' x 1-1/8" Hose
- 15.9 lbs.



Our 30" Recirculating Sluice Box Kit is built around our rugged 30" Compact sluice box. A smaller version of the

Multi Purpose Kit, it has all the same quality features. The sluice can be used alone, it can be used with our stand that includes adjustable legs to make it easy when leveling out your sluice box in any terrain, add a Header Kit when in still waters (lakes, ponds, slow creeks and rivers, etc.) or no water, then it becomes a highbanker. Our kit consists of a 30" Sluice Box, Header kit, Sluice stand that folds down to 8" X 23" with adjustable legs. With the addition of a reservoir and tailing buckets (not included), you can turn this unit into a recirculator. That's 3 machines for the price of one!

Comes with a 58 minute "how to" DVD
(When Purchased directly from Royal)

10" Folding Hybrid Sluice

\$145.00 (with our patent self-locking tab)

#00125

- Length with Flare: 56-7/8"
- Folded: 22-3/4"
- Flare: 18-1/2" wide
- Hi-Lo Rubber Riffle
- Modified Hungarian Riffle
- 1-1/2" wide shoulder strap
- Total weight: 9 lbs



Add ons available:

- 10" wide Pump Head to create your own Highbanker system (#00018, page 7).
- Dredge Ready Hopper (#00157, page 11).
- Stand Available, sold separately (please call).

Branding Irons \$20.00 each

Buffalo
#00067



Bear
#00068



Cactus
#00069



Pick Pan & Shovel
#00070



Star
#00071



Skull
#00072



Prospector
#00073



Train
#00074



Wolf
#00075



Bring back the old western days with this functional branding iron. Brand your symbol with 9 available designs. Also makes a great wall decoration and a conversation piece.

1/4" Laser cut steel logos

12" long X 3/8" hand forged twisted handle.

Caution: Adult use only.

Sample Uses:

- Toy Boxes
- Tool Boxes
- Front doors
- Picnic Tables
- Wood fences
- Cabin floors and walls.
- Wooden gates on stake bed trucks
- Bedpost
- Kitchen Tables
- Mailbox posts
- Wall Décor
- Bird feeders



Royal 18" Gold Digger Pick



\$36.00

#00112

Buy TWO for \$60.00 and save!

Holster sold separate \$7.00 #00113

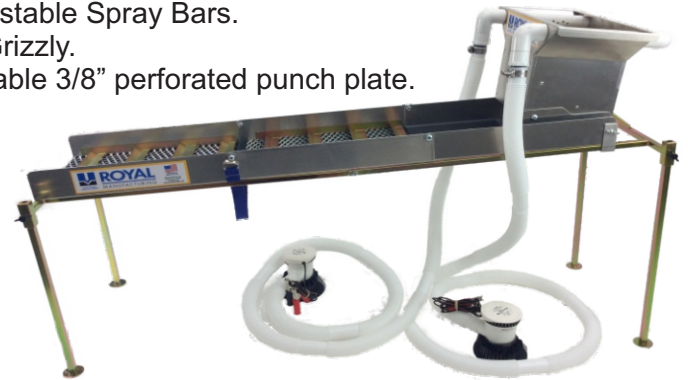
- Perfect balance of weight and size.
- Laser cut from 3/16" Micro-Alloyed Boron Steel .
- 18" Solid Hickory American Made Handle.
- Solid 1/4" Rivet
- 9.5" X 4.5" Blade
- 2.2 lbs



Multi-Purpose True Highbanker/Hopper 50" Folding Sluice Box Kit \$492.00 #00012

This kit is built around our world famous 50" Self-Locking Sluice Box. The Sluice Box can be used alone or by removing the Flare and adding the Hopper it can be used as a True-Highbanker. The following items are included with this kit.

- Self-Locking Sluice, 50" long X 9" wide, Folds down to 15" for storage.
- Removable Flare not shown, Nylon carry strap.
- Sluice Stand with four adjustable legs.
- Our new Deep "V" Rubber Matting for easy Gold ID.
- The water is supplied by 7' of 1-1/8" hose connected to two 12 volt electric 1200 GPH Pumps.
- Top of Hopper, 14-1/8" X 7-1/8".
- Two 3/4" adjustable Spray Bars.
- Removable Grizzly.
- New! Removable 3/8" perforated punch plate.



Royal True Highbanker/Hopper for 50" Folding Sluice Box

Same Hopper as shown above. Use this quality precision laser cut aluminum Highbanker/Hopper to convert your 50" long X 9" wide Self-Locking Sluice Box into a True-Highbanker. This Highbanker/Hopper is ready to attach onto your Sluice Box by removing the flare and replacing with this great little unit using the same bolts. All parts and accessories are listed above.

\$289.00

#00013

Sluice Box & Stand sold separately



Multi-Purpose True Highbanker/Hopper 30" Compact Sluice Box Kit

This Kit is built around our 30" Compact Stream Sluice Box. The Sluice can be used alone or by removing the flare and adding the Hopper it can be converted into a True-Highbanker. The following items are included in this kit.

- 30" Compact Sluice Box, 30" long X 7" wide.
- Removable Flare not shown, 4" Black Anodized Handle.
- Folding Sluice Stand with four adjustable legs.
- Our new Deep "V" Rubber Matting for easy Gold ID.
- Highbank/Hopper, top of Hopper 14-1/8" X 7-1/8".
- Hopper adjusts to two different angles.
- Two 3/4" adjustable spray bars, Ball Valve.
- The water is supplied by 7' of 1-1/8" hose connected to a 12 volt electric US Made Johnson 2200 Pump, the leads on batteries are 6' leads and battery clips., filer bags.
- Removable Grizzly, New! Removable 3/8" perforated punch plate.



\$421.00

#00014

Royal True Highbanker/Hopper for 30" Compact Sluice Box

Same Hopper as shown above. Use this quality precision laser cut aluminum Highbanker/Hopper to convert your 30" long X 7" wide Compact Sluice Box into a True-Highbanker. This Highbanker/Hopper is ready to attach onto your Sluice Box by removing the flare and replacing with this great little unit using the same bolts. All parts and accessories are listed above.

\$279.00

#00015

Sluice Box & Stand sold separately



36" Royal Gold and Relic Pick

Introducing our newest pick specially designed for use as a metal detecting and prospecting digging tool. With it's 50 lb. pull flush mounted (patent pending) rare earth magnet, conveniently centered on the head, it creates a powerful magnetic surface to better separate iron targets. Flush mounting, as opposed to surface mounted magnets, also makes for a smooth blade surface so it doesn't impact against material and it's easier to wipe clean. Zinc plated for long rust-free service life.

This pick is not made or improvised from farming plow discs or leaf springs or other inferior products intended for different applications. We've been around for 25 years producing superior quality products that you have grown to trust.

Made from 1/4" AR (Abrasion Resistant) Plate
Heat Treated to a Rockwell Hardness rating of 50
36" Solid Hickory Handle Rugged Construction
50 lb pull Rare Earth Magnet 12" X 5" Blade
Made in the USA! 4.75 Lbs.
Lifetime Warranty backed by Royal! (excludes handles)



#00065

Also available with your choice of conventional digging chiseled edge or powerful teeth (pictured on right) to better break rocks.



\$89.00!

#00064

Pick without magnet:

\$68.00

#00066

**This is the last pick you'll ever
need to buy!!**

18" Royal Gold and Relic Pick

Made from 1/4" AR (Abrasion Resistant) Plate Heat Treated to a Rockwell Hardness rating of 50 Solid Hickory Handle Strong Super Magnets Made in the USA! Rugged Construction 10.4" X 3.4" Blade 2.65 Lbs.

Lifetime Warranty backed by Royal! (Excludes handles)



\$72.00

#00061

As seen in Pick & Shovel Gazette Field Test Feb/Mar 2013



Heavy-duty black webbing holster.

\$7.00

#00063

Introducing our newest pick specially designed for use as a metal detecting and prospecting digging tool. With it's two flush mounted (patent pending) rare earth magnets, it creates two magnetic surfaces on each side of the blade. That's four magnetic surfaces to better separate iron targets. Flush mounting, as opposed to surface mounted magnets, also makes for a smooth blade surface so they don't impact against material and it's easier to wipe clean.

This pick is not made or improvised from farming plow discs or leaf springs or other inferior products intended for different applications. We've been around for 25 years producing superior quality products that you've grown to trust.



\$52.00!!

#00062

Same great pick with out the magnets.

Sluice Pump Heads

50" Folding Sluice Pump Head **\$106.00** #00016

24"/30" Compact Sluice Pump Head **\$106.00**

* Must drill two holes in 24" Sluice box to fit.

#00017

- .063" Aluminum
- 7' Long 1 1/8" Hose
- Tsunami 1200 GPH 12VDC Pump
- Detachable filter screen included
- Attaches with same bolts and holes as flare.



Attach these pump heads to your Royal Compact 24" & 30" (7" wide) and also your 50" Self-Locking (9" wide) Sluice Box to create your own Highbanker system.

54" Ultra Wide Flare Sluice Pump Head

\$139.00

#00018

- Fits 10" wide Sluice
- .063" Aluminum
- Attaches with same bolts and holes as flare.
- 7' long 1-1/8" hose
- Johnson 2200 GPH 12VDC pump

Attach this pump head to our 54" Ultra Wide Sluice and our 10" Folding Hybrid Sluice (page 4) to create your own Highbanker system.



Also available is a pump head made to fit the A52 10" Sluice Box **\$144.00** #00019

Pump Head Without Pump **\$78.00** #00020

Sluice Stands

54" Ultra wide stand **NEW DESIGN!**

This Stand fits our 54" Sluice Box. Comes with 4 independent legs, (2-16" & 2-20"). Recently re-designed, now with quick release clips. This stand will only fit a 10" wide Sluice Box.

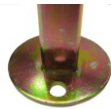


Backpacker Stand

This stand fits our 50" self Locking Folding Sluice Box. The ends come apart in the middle to make two 23.5" easily packable segments. Comes with 4 independent (2-16", 2-20") legs. The stand is 46" long and fits up to 12.75 wide sluices.



All legs have a hole to stake to ground or plywood to provide a strong foundation

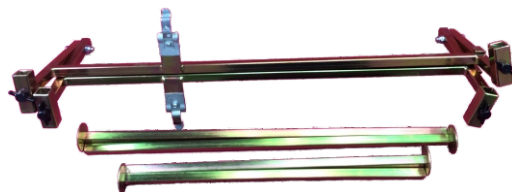


24"/30" Compact Stand



This handy stand fits both our 24" & 30" compact sluices boxes. Sluice is held by two spring -locking clips. Fold down to 8" X 23". Comes with 4 independent (2-16", 2-20") legs

Fits 7" X 2.5" Sluices Only.



Digging Knife

14" Long X 1 3/4" Wide X 1/8" Thick

Made of abrasion resistant plate steel (heat treated to a 50 Rockwell hardness rating) and with a serrated edge, this tool can get to most targets with relative ease. Zinc coating prevents rust and the cushion rubber grip protects your hands

\$29.00

#00056



Leather Sheaths

Protect your digging tool with this genuine full grain leather Sheath with belt clip. Made in the USA by a custom saddlery shop.

\$15.00

#00057

Comes in 3 colors:
Black
Natural
Deep Red



Grass Plug Extractor **\$32.00** #00059

Use this clever device to extract coins and other targets from lawns and grass fields without leaving a big hole where you dig.



Grass Plug Extractor with Lanyard **\$38.00**

#00060



Royal Gold Mortar and Pestle

- 6" Tall X 6" Diameter
- Top Grade Cast Iron

\$96.00 **Free Shipping**
#00052 **(USA ONLY!)**

The largest capacity mortar and pestle on the market today! It has a one quart capacity and a massive 5 lb. pestle! This M&P has the power you need to crush the toughest rocks you can throw in it. Like all Royal products, it's made in the USA from top grade materials. Product weight is 15.3 lbs.



Always use eye and hand protection when using this Mortar and Pestle

Crevice Tools



16" Crevice Tool **\$16.50** **#00053**

22" Crevice Tool **\$18.50** **#00054**

Laser cut from one piece of hardened AR plate. 1/8" thin to get down further in crevices to remove more gold.

3.5 Gal. Bucket

Not too heavy, not too light... Just right!

\$4.25
#00085



3oz. Garrett Snuffer bottle

Retrieves fine gold from panned concentrates.

\$3.75
#00083



Big Green Spoon Scoop **\$7.00**
#00134



This heavy duty Scoop is designed for recovering your nuggets. Very durable and convenient to carry when metal detecting.

Extension Sluice

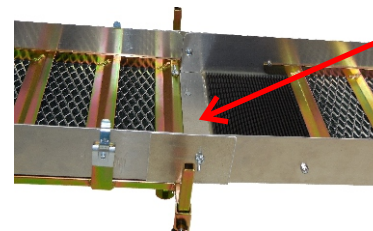
(This Extension will only fit Royal's Sluice)



\$213.00

#00159

Includes: One Adapter, One 3' long x 10" wide Sluice Box. Extend your Sluice and Double the recovery of concentrates and fine Gold.



Adapter to extend your 10" wide Royal Sluice (included with the Extension Sluice)

Leg extensions for your 10" wide Royal Sluice (included with the Extension Sluice)



Highbanker / Dredge Ready Hopper 54" Sluice Kit



\$512.00
#00158

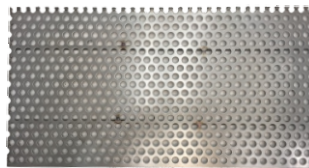
Includes everything you need to use in creeks and streams:

- 54" Sluice Box
- Ultra Wide Flare
- Matting
- Expanded Metal
- Hungarian Riffle Tray
- New improved quick release break down Stand
- Carrying handle for easy transport
- Highbanker / Dredge Hopper
- Top of Hopper is 17-1/2" X 17-1/2" with dual adjustable spray bars
- Adjustable Ball Valve
- 10" X 10-3/4" Stainless Steel perforated plate that protects the 10" X 10-3/4" removable matting



Zinc plated Grizzly adjusts to 3 angles

New In 2017! Stainless Steel 3/8" Punch Plate. By removing the Grizzly from your 54" Hopper and replacing it with this Punch Plate as seen in our Nome Alaska Video, you won't have to worry about those 3/4" X ? oval river rocks clogging up your Sluice Box anymore.



Now included at **no extra charge** when you purchase the 54" Highbanker/Dredge Ready Hopper kit!

NEWLY IMPROVED WITH SAME GREAT PRICE! Royal Gold Super Shaker!

Classifying as you know it has changed! Get your head out of the sand... Literally!

\$179.00
#00051



Patent No:
US 9,095,881 B2

Make your life easier with the Royal Gold Super Shaker. Shovel your material into the classifier and just step on the pedal. It will shake it four times horizontally and produce 2 "pounding" vertical actions. Change classifiers easily with the flip of 3 spring clips.

- Get your face further away from the dirt.
- Shovel and classify without setting your shovel down.
- The emptying of rocks is at waist level. NO bending over!
- Foot pedal operation eliminates cords, motor and batteries.
- Heavy duty funnel ensures dirt falls in bucket.
- Use your own classifier screen from most manufacturers.
- Replaceable bronze bushings at all wear points.
- Zinc plated steel for long rust free life.
- Cam action plate made of AR (Abrasion Resistant) Steel.
- 28 lbs. of durability.

NOW WITH TWO CHOICES, SAME GREAT PRICE!!

Option 1 (2) US Made all Plastic Classifiers, 1/2" and 1/4"

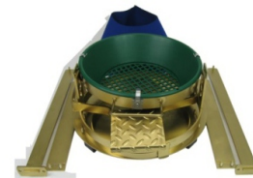
OR

Option 2 (3) IMPORT Stainless Mesh Classifiers, 1/2", 1/4" & 1/8"



Unassembled frame is easy to ship in a small box.

(BUCKET NOT INCLUDED)



Assembly required

Panning Concentrates

These panning concentrates are guaranteed to contain real natural gold! This gold was mined from our gold claim, in the Historic Rand Gold Mining District, Kern Country, Southern CA. Perfect for practicing or trying out your new equipment before you head out prospecting.



#00011
16 oz. Bag
\$20.00



#00010
32 oz. Bag
\$40.00

Royal Power Vac!

The Royal Power Vac is designed for gold prospecting around the Echo 25.4cc 2 cycle engine that delivers more suction power than other gas vacuums on the market. It cleans gold from cracks and crevices as easily as from flat ground. It also quickly attaches to your 3" hose to run your Dry Washer.

Includes:

Crevice Nozzle, 6 foot long 2-1/2 inch suction hose, 16" Crevice tool laser cut from one piece of hardened Abrasion Resistant Steel and 2 cycle engine oil.

All items fit in a .090 mil Heavy Duty 5 gallon bucket with an easy to open screw on lid (supplied), for convenient storage. Blower is secured to lid by 1/4" thick aluminum plate with bolts and nylock nuts for superior durability. Others use a plastic adapter sheet secured by pop rivets and wood screws that rattle loose with the vibration of the blower. Actual item weight is only 15 lbs!

\$399.00

#00050



Highbanker / Dredge Ready Hopper

Convert your 10" wide Sluice Box to both a Highbanker / Dredge. The top of Hopper is 17-1/2" x 17-1/2" with dual adjustable and removable spray bars. Comes ready to receive a 2" Dredge Adapter (sold separately, see below). Includes adapter to attach Hopper to your 10" wide Sluice Box. The water inlet is equipped with a 1-1/2" barbed fitting that is removable. Use the ball valve to adjust water supply, Zinc plated Steel Grizzly is removable and also adjusts to 3 different angles, from clay to gravels. Included is a 10" x 10-3/4" Stainless Steel perforated plate that protects the 10" x 10-3/4" deep ribbed matting both removable. Total weight is 14 pounds.

\$307.00

#00157



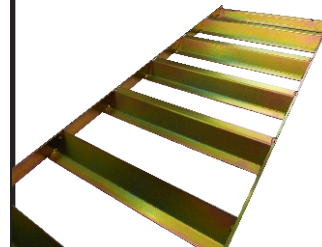
54" Steel Dredge Riffle

(Use on our 54" Ultra Wide Sluice Box)

Larger, deeper Sluice Riffle tray for high production when High Banking. This Riffle can handle more material than the standard Riffle.

\$56.00

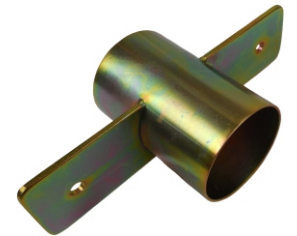
#00155



2" Dredge Adapter

\$22.00 **#00154**

Optional for Dredging, Zinc Plated for durability.



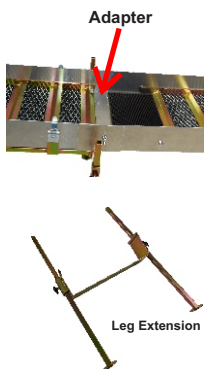
6' Ultra Wide Flare Stream Sluice Kit

\$548.00 #00160



Includes Everything You See Above:

- The original 54" Ultra Wide Flare Stream Sluice Box
- New improved quick release break down Stand
- Header Box, 7' long 1-1/8" hose, Johnson 2060GPH 12VDC Pump
- Pump Filter Screen not shown
- Royal's NEW Extension Sluice, Adapter for connecting, Leg Extension
- Matting, Expanded Metal & Riffles



Royal Trommel Kit

\$812.00

#00164

- Total Unit weight: 47 lbs
- Fully enclosed spray bar system, spraying from outside in (dislodges "lodged" rocks)
- Trommel powered by: 12 volt variable speed control with 6' long power cord
- 3/4" brass ball valve for control of hopper spray bar
- All hinges & wheel support bolts are stainless steel
- Trommel Screen made from 14ga stainless steel
- Trommel Screen size: 6" x 20", hole opening are 3/8", 52% open
- Pump: Johnson 2200 GPH with clips, US Made!
- 7' of 1-1/8" hose
- Trommel Unit is powder coated for durability
- Sluice Box size: 7" W X 31" L, (not including adapter) size with adapter is 36" long
- Removable punch plate over rubber on Sluice Box, 6-3/4" W X 12" L
- 1 Year Warranty on Trommel Only



Instructional DVD's

Learn how to use your new equipment properly. These professionally filmed and edited DVD's will show you how to select equipment, sites and proper set up angles. They also include time saving tips and techniques and proper cleanup and care of your equipment.

Self Locking Folding Sluice Box

#00047

58 minutes run time



12-volt Highbanker/Recirculator

#00048

38 minutes run time



Royal Gold Drywasher

#00049

70 minutes run time



Buy one for: \$7.00 any two: \$13.00 all three: \$19.00

**Free shipping on all DVD's!
(USA ONLY)**



Royal Hat!

\$5.00 ea

#00108

Black & Green Gold Pans

This pan is not like the others out there, they are very ridged with deep sharp riffles.

14" Round \$7.00 each #00141

12" Round \$6.00 each #00140

10" Round \$5.00 each #00139



Royal Panning Kit \$50.00 #00078

Includes the following:

- 14" Garrett Gravity Trap
- 14" X 1/2" Garrett Classifier
- 1/8" Sifting Pan
- Black Sand Wand
- Treasure Scoop
- Plastic Funnel, 40 ml.
- Glass Vials, 1oz, 1/2oz, 1/4oz
- Tweezers
- 3oz Garrett Snuffer Bottle
- Royal 2015 Catalog
- Royal Sticker
- 58 minute instructional DVD



OFFICIAL GPAA MEMBERSHIP KIT

\$84.50 Includes shipping
#00131

INCLUDES:

- Member Mining Guide
- 14" Gold Pan
- Gold Prospectors Magazine
- Pick & Shovel Gazette
- Snuffer Bottle
- GPAA Patch (2)
- GPAA Hat
- GPAA Bumper Sticker
- How to DVD



Sluice Box Pumps

Tsunami Pumps

500 GPH Pump 2amp \$22.00 #00024

800 GPH Pump 3amp \$30.00 #00025

1200 GPH Pump 4amp \$40.00 #00026

Original equipment for Royal Highbanker and Recirculating Headers. All three pumps come with 29" leads and weigh one pound.



Clips not Included

Johnson Pump

2200 GPH Pump 7.5amp \$89.00 #00027

Original equipment for Royal Highbanker and Recirculating Headers. Pump comes with 72" lead and weighs 5 lbs. Supplied with both 1-1/8" and 1-1/4" barbed fittings.



Clips not Included

Pump Filter Bag \$7.00 #00029

This filter screen easily slips over most pumps and creates more "screenable" surface area. This lengthens the time between clean-ups and protects your pump from foreign debris. Made from non-rotting materials. Fits all pumps on this page.



Pump not included

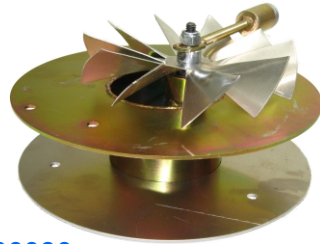
Battery Clips \$3.50 #00028

Use these to connect your pump to a battery or other power source



Drywasher Motor

With adjustable counterweight, Make your own Drywasher or have one handy as a spare.



Royal King 5" Fan, 4" intake \$61.00 #00030

Royal Gold 5" Fan, 3" intake \$51.00 #00031

Explorer 4-1/2" Fan, 3" intake \$51.00 #00032

Drywasher Hose

Our Drywasher hoses are sold in 10' sections. This is original equipment on our Drywashers.



3" Hose (Royal Gold & Explorer) \$21.00 #00033

4" Hose (King) \$23.00 #00034

Replacement Drywasher Screens

Screen mounted to plated perforated Steel and are ready to use.

Royal King 12-7/8 x 31-5/8 \$26.00 #00035

Royal Gold 9-7/8 x 21-3/8 \$19.00 #00036

Explorer 6-7/8 x 15-7/8 \$17.00 #00037

Pump Hose by the foot

This Hose is original equipment on our Sluice Box Header Kits, Highbanker/Recirculator and is sold by the foot.

3/4" Diameter \$1.00 per foot #00038

1-1/8" Diameter \$1.50 per foot #00039



Pans and Classifiers

14" GPAA Gold Pan \$11.00

Official pan of the GPAA #00082



14" Garrett Round Gold Pan

Get gold with this pan \$10.00

#00081



14" X 1/2" Garrett Classifier

Maximum size to work properly with Sluice Boxes \$9.00

#00079



13 1/4" Wire Mesh Classifier

Mesh Size Wire Thickness #00138

| | | |
|--------|--------|---------|
| 1/2" | 1.4mm | \$12.00 |
| 1/4" | 0.95mm | \$12.00 |
| 1/8" | 0.6mm | \$12.00 |
| 1/12" | 0.45mm | \$12.00 |
| 1/20" | 0.35mm | \$12.00 |
| 1/70" | 0.14mm | \$12.00 |
| 1/100" | 0.10mm | \$12.00 |



Set of 7 classifiers (1 each from above)

\$71.00 each set

#00133

Fits standard 3-1/2 and 5 gallon buckets. All mesh on classifiers are stainless steel.



Snappy Grip For Your Bucket

Snappy Grip is a great accessory to replace that uncomfortable hand grip when carrying your bucket for any distance. PLEASE MAKE NOTE ON YOUR ORDER WHAT COLOR YOU WOULD LIKE.

\$1.50 each
#00076



Bucket not included!

Screw On Lid \$10.00 each

#00077

Turn any 3-1/2 to 5 Gallon bucket into a water tight bucket by simply snapping on the rim and unscrewing lid.

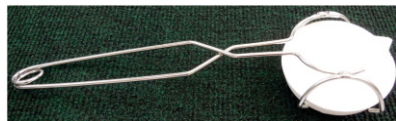
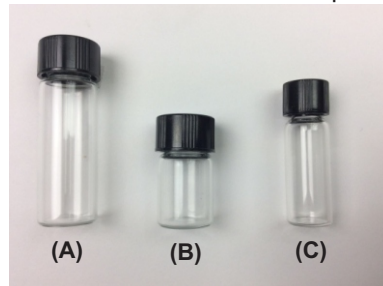


Bucket not included!

Glass Display Vials

- (A) 1 oz \$0.40 ea
- (B) 1/2 oz \$0.40 ea
- (C) 1/4 oz \$0.25 ea

Black Phenolic Screw Caps



Ceramic Crucible sold separate

Ceramic Pot Holder

Protect against burns

\$10.00 #00145



Tweezers with Magnifier

- Magnification: 4x
- Lens Diam: 1"
- Glass Lens
- Stainless Steel Body
- Pouch

\$2.50
#00137



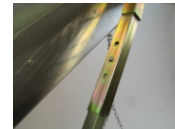
3" Alumina Ceramic Crucible
• Max Temp: 2500 °F
• 60% Aluminum Oxide Mix
• Round Bottom
\$3.50
#00135

Royal Gold Drywasher

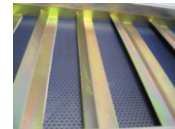
Field tested by Gold Prospectors Magazine (Mar/Apr 2013)!

Royal Gold has a 10" x 24" Recovery Box and is 47" tall which is the proper working height. Total weight is 27.75 lbs

\$531.00
#00040



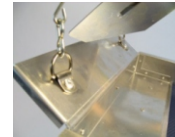
Hopper adjusts to 3 feeding angles to accommodate different types of materials.



Combination Riffles laser cut from a single piece of steel for enhanced recovery.



Baffled first Riffle to ensure even air pressure to prevent blowout of ultra fine gold at first Riffle.



Dirt slide and adjustable flow valve.



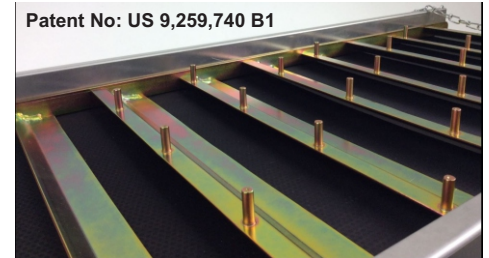
Backup washer on all stressed rivets.



Buy a Drywasher and the Power-Vac (page 26) and get a 10', 3" hose for Free!

NEW! Drywasher Rake Riffle

The pin design operates like a rake, settling heavy material to the bottom. Designed to open up channels for gold to fall down. The pins transfer vibration to upper levels of material being processed.



Patent No: US 9,259,740 B1

• Upgrade your DryWasher with our New Rake Riffle!
Royal Gold DryWasher Upgrade: Add \$44.00
Explore Upgrade: Add \$38.00

• Purchase DryWasher Rake Riffle Separately.
Royal Gold DryWasher Rake Riffle: \$88.00
Explorer Rake Riffle: \$78.00

Explorer

The Explorer has a 7" x 18" Recovery Box, total height is 38.5" tall and weighs 20 lbs

Both Drywashers have the following features not common in the competition.



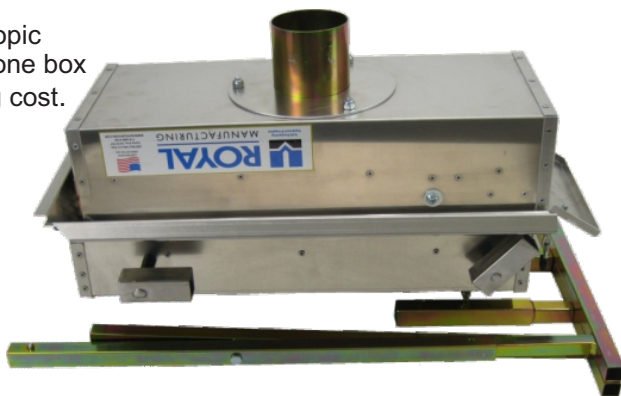
\$389.00

#00041

Comes with a 70 minute "how to" DVD.
(When purchased directly from Royal)

- Fully enclosed hopper so no large rocks get in under the classifier clogging the flow valve.
- Oversized hopper for easy feeding.
- All steel components are zinc plated for durability.
- Combination riffles laser cut from a single piece of steel for enhanced recovery.
- Baffled first riffle to ensure even air pressure to prevent blowout of ultra fine gold at first riffle.
- Stainless steel frame receiver sockets and cross pins.
- When riffles are opened, concentrates easily slide into gold pan.
- Easy no-tool breakdown. Nothing to lose.
- Electrostatic isolated recovery box.

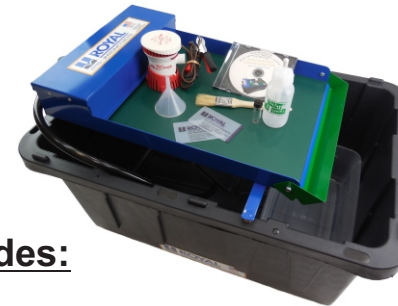
With the Explorer's telescopic legs, it can be shipped in one box thus reducing the shipping cost.



Royal Gold Dust Concentrating Table

\$246.00

#00130



Includes:

- T-500 TSUNAMI Pump with Clips
- Large bin with Lid
- 3oz Snuffer Bottle
- 45 minute instructional DVD
- Written instructions
- Stainless Steel Flip Up Recovery Tray powder coated green for better gold ID
- Royal Squeegee Card (2)
- Tailing Bucket
- 1oz Glass Vial
- Plastic Funnel
- Paint Brush

If your tired of panning, let this machine do the work for you. Introducing our newest product. With this table you will be able to Recover fine and flour gold easily because the matting that we use is like a magnet. The table measures 12" X 18". The adjustable leveling nuts on the support bar makes the set up simple.

- Durable Powder Coat finish, No corrosion
- No open cell rubber to hold water
- No spray bar head to create bubbles
- Compact size • No filter bag to clean
- Captures 600 & 800 mesh Gold and fine dust
- Wash concentrates to remove any clay
- Classify your material down to 1/16 (12 mesh)



Recirculating Filtration System

(SOLD WITH (1) 12 MESH CLASSIFIER)

Tub With Exchangeable Filter & Frame, 3.5 Gal Bucket, 5 Gal Bucket & PVC Pipe with (2) Grommets

\$81.00 Complete #00170

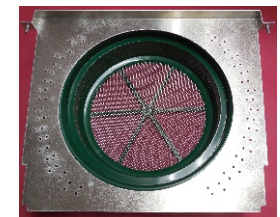


Grommet also sold separtely \$5.00 EA

#00174

Filter Frame with one 12 Mesh Classifier. Additional size Classifiers sold separately

\$46.00 #00171



Royal Gold Highbanker \$337.00

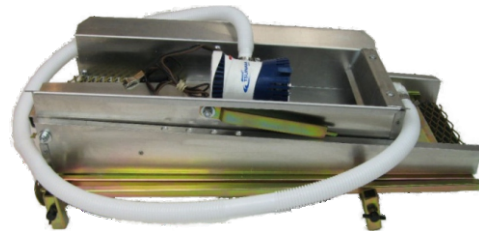
#00046

This machine accepts full size shovel loads. Works directly in any water source (creeks, ponds, rivers, etc.) or even from a reservoir container. With addition of your 30 gallon reservoir and tailing bucket (Not included), you can turn this Highbanker unit into a Recirculator! The 100% welds on stand makes it one very durable unit. Please don't confuse this unit with cheap imitations! This is a rugged well built unit that can withstand the weight of a man standing on the Grizzly. This is where the classification is done and all the abuse takes place.

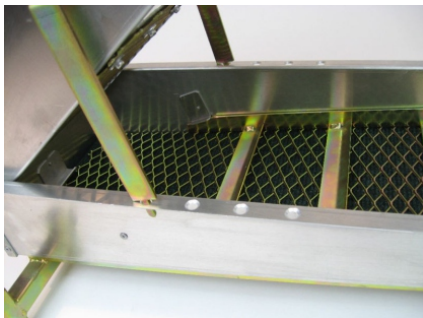


- .063" Aluminum
- 24" Long X 8" Wide
- 13 gage Expanded Metal
- Five 18 gage Zinc Plated Riffles (Gold coloring)
- Tsunami 800 GPH Pump
- Four 24" independent legs
- 14 lbs of Gold Gettin Durability!

Instructional DVD included
(when purchased directly from Royal)



Folds down to 8" x 24" for
Easy transport and storage.



4 holes for easy angle adjustment to
adapt to different materials.

Royal King \$1,106.00

#00042

Our Royal King Drywasher IS THE LARGEST CAPACITY DRYWASHER MANUFACTURED IN THE USA! We pay special attention to building the best quality and the most durability machine with our customers in mind. This Drywasher has many fine features not found on any other Drywashers on the market today. Additional quality without the additional price.

Hopper: 27" x 40"
Recovery: 14" x 34"
Stands: 56" tall



- The Hopper is fully enclosed so no large rocks get in under the classifier clogging your adjustable flow valve.
- Royal King Hopper is oversized at 40" X 27" for easy feeding.
- Constructed of 143 rivets making this a more durable stronger product.
- All steel components are zinc plated for durability.
- Full 56" high so the Hopper is at the proper working height.
- 49 lbs. of Gold getting durability.
- Stand included.
- Silicon rubber insulator on all chains connected to recovery box so that the static charge builds quicker, stronger and does not dissipate quickly.

Royal King Combo Complete!

Dry Washer
4" Hot Air Blower
4" x 10' Hose

\$1,715.00

#00043

4" Hot Air Blower Also
Sold Separate **\$629.00**

#00044



GCV160
POWERED BY
HONDA



In use commercially World Wide!

* Shipping in the lower 48 States. Please NO PO Boxes
due to the oversize box size.

STORE/SHOWROOM

ON-SITE 1,000 SQ FEET!

**ONLY STORE
IN ORANGE COUNTY!**



**OPEN:
MONDAY-FRIDAY
7AM-3PM
Later hours available
if called in advanced (714) 668-9199**

**APPROXIMATELY
12 MILES FROM
DISNEYLAND**